

Showcase modules with ALU slatwall panels, double height, Extension module

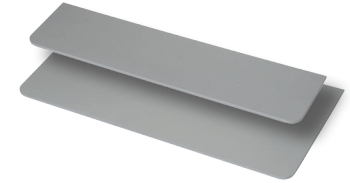
Item.no: **Midi** IS-9423-1
Maxi IS-9423-2

Complete with:

2 Wave base post, 763 mm	Midi IS-9423-1 IS-W763-BPH	Maxi IS-9423-2 IS-W763-BPH
2 Extension post, 750 mm	IS-0750-EE	IS-0750-EE
2 Top post, 755 mm	IS-0755-ET	IS-0755-ET
2 Extension post, 200 mm	IS-0200-EE	IS-0200-EE
2 Wave foot	IS-WFT-02	IS-WFT-02
2 Base post	IS-0750-EB	IS-0750-EB
2 Extension post, 750 mm	IS-0750-EE	IS-0750-EE
2 Top post, 755 mm	IS-0755-ET	IS-0755-ET
4 Straight beam, 800	IS-800-BS	IS-800-BS
4 Straight beam, 400	IS-400-BS	IS-400-BS
18 Alu slatwall panels	IS-9364	IS-9364
1 Base shelf, grey	IS-9398	IS-9398
1 Top shelf, White	IS-SW-09	IS-SW-09
2 Corner Trims	IS-0770-CT	IS-0770-CT
2 Corner Trims	IS-0810-CT	IS-0810-CT
1 Kickers & Hangers	IS-800-KHN	IS-800-KHN
1 Bag for shelves	IS-80-TB05	IS-80-TB05

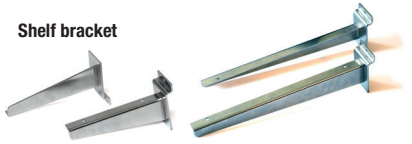


Accessories



Shelf, 180 grey
750x180x12 mm /
29.5x7.0x0.47"
Item IS-9618

Shelf, 330 grey
750x330x12 mm /
29.5x13.0x0.47"
Item IS-9619



1 pair of shelf bracket 180
150 mm / 5.9"
Item IS-9375

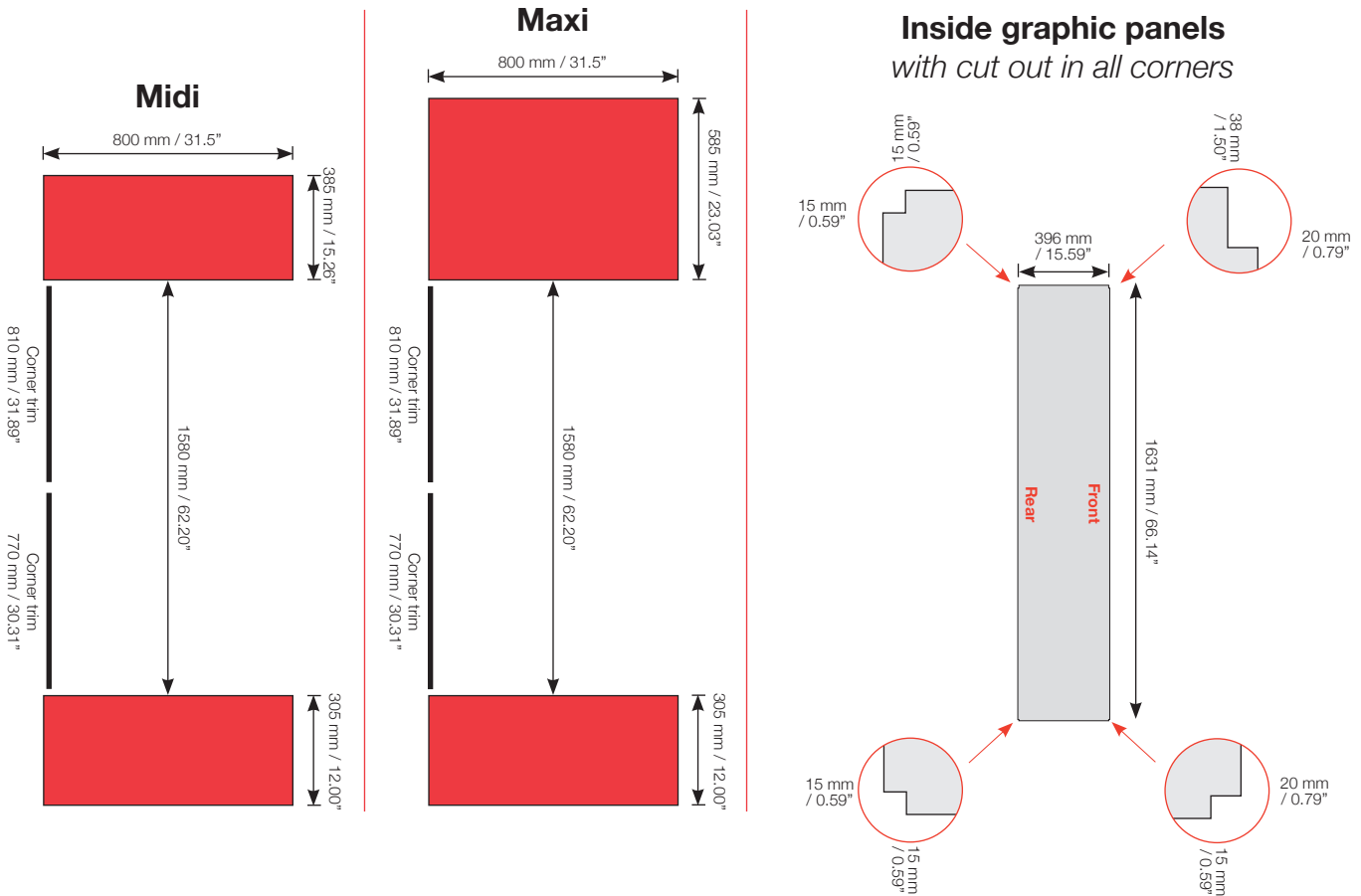
1 pair of shelf bracket 330
300 mm / 11.8"
Item IS-9399

- Mount the feet at the base posts and attach one 800 beam 271 mm from the bottom of the posts with the steel tape at the front.
- Follow with the two posts at the back with the magnetic tape facing backwards. Mount the two 400 beams and the 800 beam at 258mm high.
- Mount the extension and top posts onto the front posts. Attach the corner trims above the 800 beam and then add another 800 beam above the corner trims.
If you want Maxi height, add two short extension posts in the front before you mount the top post.
- Mount the extension and top posts on the back posts and the 400 beams at each side. Level the system – see Basic instruction.
- Insert the 18 aluminium panels into the back of the case and end with a 800 beam at the top.
- Attach the side panels.
- Slide the top shelf into the track in the back 800 beam.
- Attach the bottom shelf.
- Mount the top and bottom graphic panels.
- Attach shelves as desired (Accessories, not included)

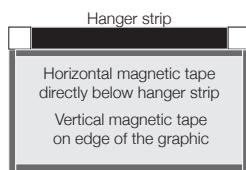
Graphic production and corner trim

Example of graphic panel:

You can attach the showcase in that height you want, the opening is always 1580 mm/62.20".



Graphic panel attachments



Horizontal magnetic tape on edge of the graphic

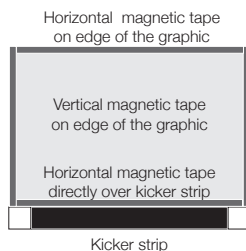
Accessories

Kickers & Hangers

(incl. for the first set of panels)
800 mm / 31.5"
Item IS-800-KHN

Magnetic tape (not incl.)
12 mm/0.5" A tape, 30 m / 98 ft.
Item 82281

Each panel needs:
Midi 6,2 m / 21 ft.
Maxi 6,6 m / 22 ft.



Kicker strip

Printer material

We recommended the following material:

Poster paper: 180 gr / 0.4 lb.
The printed graphic panels must be laminated before use.
Front side: 125 microns (0,125 mm) / 0.005"
Reverse side: 250 microns (0,250 mm) / 0.010" "stop light"

Polyester film: 330-370 microns (0,350 mm) / 0.013-0.015"
Top laminate: 125 microns (0,125 mm) / 0.005"



Kicker

Hanger

Mounting of Kickers and Hangers

Kickers and hangers to be fixed at the bottom and at the top of the graphic panels (reverse side).

Mounting of Magnetic Tape

Magnetic tape to be fixed **horizontally** directly over/under kicker/hanger strip.
Magnetic tape to be fixed **vertically** along each side of the graphic panels.

IMPORTANT Carefully mount the magnetic tape slightly inset from the edge of the graphic panel by approximately 0,25 mm / 0.010". Once mounted, a very thin straight white line should show between the edge of the graphic and the outside edge of the magnetic tape. Do not exceed 0,5 mm / 0.020".

Application Techniques

To obtain optimum adhesion, the bonding surfaces must be well unified, clean and dry. Typical surface cleaning solvents are isopropyl alcohol/water mixture (rubbing alcohol) or heptane.

Note: Be sure to follow solvent manufacturer's precautions and directions for use when using solvents.