



BANNERUP[®]

A Family of Dependable Displays



Assembly instruction

Double sided model

Change of printed banner



Roll the old banner out of the cassette.



Insert the locking pin.



Slide the banner out.

Mount two **new** rails (one Quick-change kit) on to the new banner.

Follow "Mounting of printed banner" on the previous page.

TENSION ADJUSTMENT

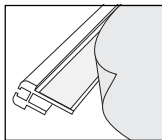
All cassettes are pretensioned before delivery.



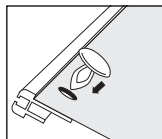
If adjustment is needed, hold the cassette firmly in place then depress and turn the adjusting screw clockwise to increase the tension (the tension mechanism adjusts in halfturn increments). Slowly release pressure on the screw turning slightly counter-clockwise and allow it to again lock in place. If tension has been lost completely, we recommend 20-25 full clockwise turns.

Mounting of printed banner

Top rail



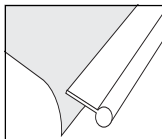
Mount the top rail on the **reverse side** of the banner, parallel to the upper edge.



Maximum security.

Carefully make holes in the banner to align with the holes in the rail. Insert the plastic push pins provided.

Bottom rail



Mount the bottom rail on the **front side** of the banner.

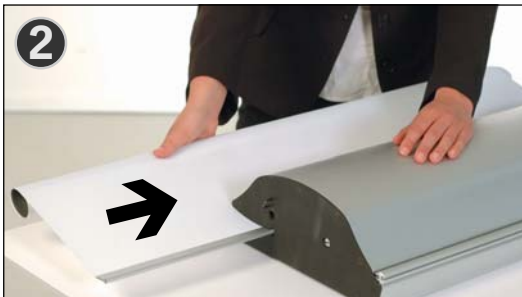
1



IMPORTANT !

Roll **laminated** banners **print-side out**.
Roll **non-laminated** banners **print-side in**.

Slide the bottom rail into the cassette.



Never pull out the "Locking Pin" until a banner is loaded into the cassette

Hold the banner and remove the locking pin.

Let the banner **slowly** roll into the cassette.



IMPORTANT

Always **roll the banner slowly** in and out of the cassette, and be sure to **centralise** the feed in to avoid edge damage to the graphic.

This is particularly important for unlamined (unprotected) banners. You may also need to steady the cassette, with a foot, as the recoil is quite strong.

Production of printed banner

The banner material can be vinyl, fabric, double sided laminated paper etc.

Laminated banner material should be soft (supple) enough to roll easily around the cassette roller at normal spring tension. 0,45 mm (0.018") is the maximum thickness to be used.

Banner dimensions

Visible part of banner material:

206 cm (81")

With extension pole,
item 89255 = 225 cm (88").
item 89256 = 244 cm (96").
item 89257 = 294 cm (116").

Printed length of banner:

210 cm (83")

With extension pole, 19 cm = 229 cm (90").
With extension pole, 38 cm = 248 cm (97").
With extension pole, 89 cm = 298 cm (117").

Min. extra banner material (unprinted): 30 cm (12")

Total length of banner material:

240 cm (95")

With extension pole, 19 cm = 259 cm (102").
With extension pole, 38 cm = 278 cm (109").
With extension pole, 89 cm = 328 cm (129").

Width, max (do not exceed):

88 cm (34.65")

Full height, 3 pole sections

Visible banner height:
206 cm (81")

With extension pole , item 89255 = 225 cm (88").
With extension pole , item 89256 = 244 cm (96").
With extension pole , item 89257 = 294 cm (116").

Total banner length:
240 cm (95")

Mid-height, 2 pole sections

Visible banner height:
140 cm (55")

Total banner length:
174 cm (69")

Lowest height, 1 pole section

Visible banner height:
73 cm (29")

Total banner length:
107 cm (42")

Additional print: 4 cm (1.5")

Extra banner material (unprinted): 30 cm (12")

Facts

	88 cm	3 ft.
Banner width	88 cm	34.65"
Full height w/ cassette	212 cm	83.5"
Visible banner height	206 cm	81"
Weight (excl. banner)	13,4 kg	29.5 lbs
Cassette dimension	28,5 x 11,5 x 89,5 cm	11.2"d x 4.52"h x 35.2"w
Item No.	81125	81125

Accessories



Extension pole

for visible height of 225 cm (88"), item no. 89255

for visible height of 244 cm (96"), item no. 89256

for visible height of 294 cm (116"), item no. 89257

Quick-change banner mounting kit

1 pair of banner rails (top and bottom) with mounting tape and
6 plastic push pins. *(2 kits included in 81125).*

Item no. 81020

*For other accessories, such as carrying cases,
spotlights etc., see our general price list.*

Application Techniques

- To obtain optimum adhesion, the bonding surfaces must be well unified, clean and dry. Typical surface cleaning solvents are isopropyl alcohol/water mixture (rubbing alcohol) or heptane.
Note: Be sure to follow solvent manufacturer's precautions and directions for use when using solvents. (Step A and B).
- Bond strength is dependent upon the amount of adhesive-to-surface contact developed. Firm application pressure develops better adhesive contact and helps improve bond strength (Step C).
- After application, the bond strength will increase as the adhesive flows onto the surface. At room temperature approximately 50% of the ultimate strength will be achieved after 20 minutes, 90% after 24 hours and 100% after 72 hours. In some cases bond strength can be increased and ultimate bond strength can be achieved more quickly by exposure of the bond to elevated temperatures (e.g. 150°F /66°C) for 1 hour). This provides better adhesive onto the substrates.



Step A:
Solvent wipe



Step B:
Wipe dry



Step C:
Firm pressure onto surface

Assembly instruction

Double sided 88 cm (3 ft.)



BannerUp comes in a padded carrying bag with wheels and a shoulder strap.



Take two of the pole sections and mount these on the cassette.



Mount the plastic top holder on the third pole (untapered side).



... and mount it on top of the other poles.



Pull the first banner up and hook the top rail to the top holder.



Pull the second banner up and hook it as well. **Ready!**

Never pull out the "Locking pin" until a banner is loaded into the cassette!

This will immediately release the spring tension and can damage the mechanism.