

Ripple flexible stand

Basic basis module (Mini height)

Each module contains: 1 top beam, 1 bottom beam, 1 base post, 1 centre post, 1 top post, 1 kicker and 1 hanger.

Item no. IS-9800

Add on 170 mm (Midi height)

Each set contains: 1 extension beam (1790 mm) and 4 centre magnetic joining strips.

Item no. IS-9805

Ripple Flex-Link kit

Each kit contains: 1 kicker, 1 hanger and 2 top, 2 centre and 2 bottom magnetic joining strips.

Item no. IS-9802



Accessories



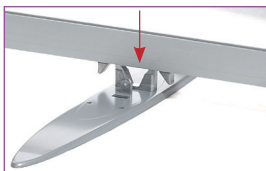
LED telescopic spotlight in tube
12V / 5 W incl. transformer
Item. IS-9838



LED spotlights in bag
12V / 18 W incl. transformer
Item. IS-SL-LED



Media screen holder
VESA 75/100
Item. IS-9835

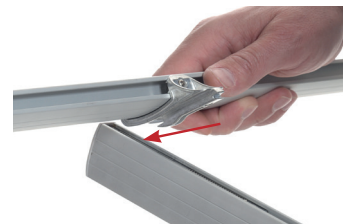


1 Start by clicking the bottom beam onto the foot.

2 Mount the base post onto the foot and lock it with the FASTClamp.



Midi height (Extra)
Mount the extension post on top of the centre post.



3 Mount the centre post onto the top of the base post.

4 Push the top beam upwards in the top of the post until the spring loading secures it in place.



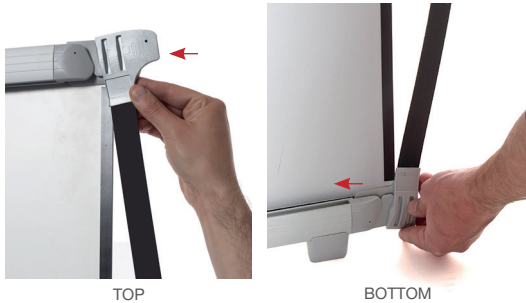
5 Mount the top post with the attached top beam onto the top of the centre post

6 Mount the graphic panel, starting at the top left side and proceeding to the right side

7 At the bottom of the graphic panel pull it down to push it onto the bottom beam at each side.

8 Build up the next stand, following points 1-7

Follow reverse side



TOP

BOTTOM

9 Slide in the top and bottom graphic joint from the side and mount the centre magnetic joint on the sides where you want to attach the Flex-Link graphic panel.
For **Midi** height, replace the single centre magnetic joining strip with the 2 in the Midi kit.



10 Attach the Flex-Link graphic between your two Ripple Stands



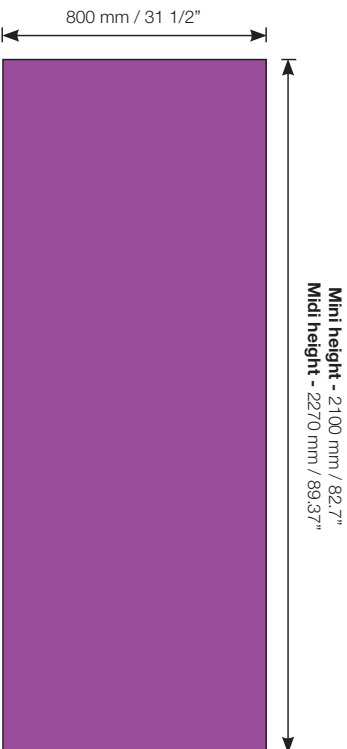
11 Now you can add more stands and Flex-Link graphics.

Release the foot

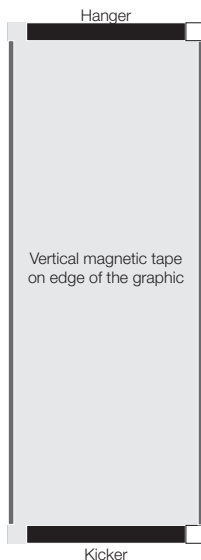


1 To release the foot from the bottom beam, press the two handles at the centre and lift up the foot.

Graphic measurement



Graphic panel attachments



Accessories

Kickers & Hangers
(incl. for the first set of panels)
800 mm / 31 1/5" Item IS-9803

Magnetic tape (not incl.)
12 mm/0.5" A tape, 30 m / 98 ft. Item 82281
Each panel needs: 4,5 m / 14,7 ft.

Printer material

We recommended the following material:

Poster paper: 180 gr / 0.4 lb.
The printed graphic panels must be laminated before use.
Front side: 125 microns (0,125 mm) / 0.005"
Reverse side: 250 microns (0,250 mm) / 0.010" stop light"

Polyester film: 330-370 microns (0,350 mm) / 0.013-0.015"
Top laminate: 125 microns (0,125 mm) / 0.005"



Kicker

Hanger

Mounting of Kickers and Hangers

Kickers and hangers to be fixed at the bottom and at the top of the graphic panels (reverse side).

IMPORTANT Carefully mount the Kickers & Hangers slightly inset from the edge of the graphic panel by **approximately 0,5 mm / 0.020"**.

Mounting of Magnetic Tape

Magnetic tape to be fixed **horizontally** directly over/under kicker/hanger strip. Magnetic tape to be fixed **vertically** along each side of the graphic panels.

IMPORTANT Carefully mount the magnetic tape slightly inset from the edge of the graphic panel by approximately 0,25 mm / 0.010". Once mounted, a very thin straight white line should show between the edge of the graphic and the outside edge of the magnetic tape. Do not exceed 0,5 mm / 0.020".

Application Techniques

To obtain optimum adhesion, the bonding surfaces must be well unified, clean and dry. Typical surface cleaning solvents are isopropyl alcohol/water mixture (rubbing alcohol) or heptane.

Note: Be sure to follow solvent manufacturer's precautions and directions for use when using solvents.